



TOBACCO ENGINEERING

---



## **BENEFITS**

- Low cost of ownership and simple operation
- Small footprint and easy installation
- High efficiency
- Optional features provide a tailor made solution

# **CIGARETTE TOBACCO RECLAIM SYSTEM TYPE CR120**

---

The LTL Group are designers and manufacturers of process equipment for the world tobacco industry. The CR120 Cigarette Reclaim System is capable of reclaiming cut tobacco from 120kg of waste cigarettes and rod break-out every hour at an efficiency of 99.8% and a typical re-useable tobacco recovery rate in excess of 90%.

The unit is very compact (see general arrangement overleaf) and up to three machines can be operated by one person. Being entirely self contained the CR120 simply requires fixing to the floor and an electrical power connection before operation. The machines are supplied with an operators manual and full twenty four month parts and labour warranty.

The LTL CR120 Cigarette Reclaim system incorporates a unique cigarette alignment tray which ensures that the cigarettes enter the cutting head with the correct orientation. This greatly improves the efficiency of the reclaim operation and allows increased throughputs without a reduction in performance. The system includes an in-built reverse jet filter system to remove entrained dust from the secondary pneumatic separation stage thus minimising local environment and operator health issues.

# CIGARETTE TOBACCO RECLAIM SYSTEM TYPE CR120 FUNCTIONAL DESCRIPTION

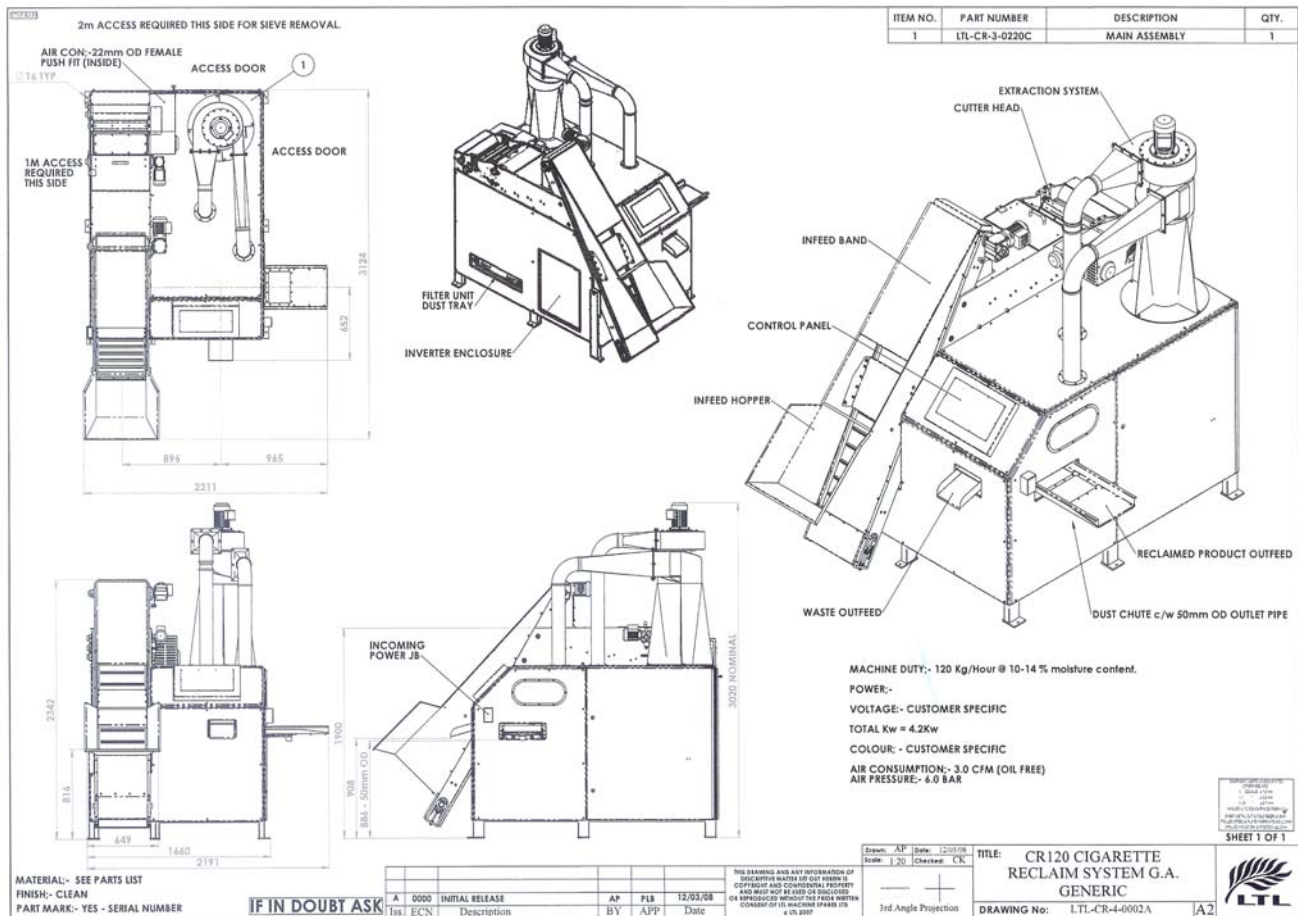
## GENERAL DESCRIPTION

The CR120 comprises of a hopper with elevating band, a cigarette alignment tray, a high speed band conveyor, cutting head and flail assembly, twin lane sieving conveyor, pneumatic system and product discharge conveyor, all housed within a single compact unit.

## SEQUENCE OF OPERATION

Waste cigarettes are manually loaded into the hopper and elevated by a flighted band conveyor. The flighted band discharges onto a vibrating alignment tray which feeds onto a high speed band conveyor. The high speed band ensures an even flow of cigarettes into the cutting head. The cutting head comprises of a driven roller / knife assembly which slits the paper of the cigarette whilst retaining the filter intact.

The opened cigarettes then enter the flail assembly which separates the tobacco from the waste paper. Tobacco, filters and paper then all proceed to make a first pass over one side of the twin lane sieving conveyor where the majority of the recovered tobacco is separated from the waste material and is discharged from the machine. All of the waste material is then discharged into a pneumatic pick-up and passes through a paddle type fan which loosens and separates any remaining tobacco from the waste and then onto a cyclone separator. The product discharged from the cyclone then makes a second pass over the sieve in the second lane to separate tobacco from the waste. The waste is then discharged from the machine. All motors are controlled from a panel mounted on the front facia of the machine.



LTL Machine Spares Limited  
 (A trading name of Leatham Tobacco Limited)  
 Martins Lane, Chilbolton,  
 Stockbridge, Hampshire, United Kingdom. SO20 6BL  
 Tel: +44 (0)1264 861030 Fax: +44 (0)5601 265976  
 Email: Sales@LTL-ENG.com Web: www.LTL-ENG.com